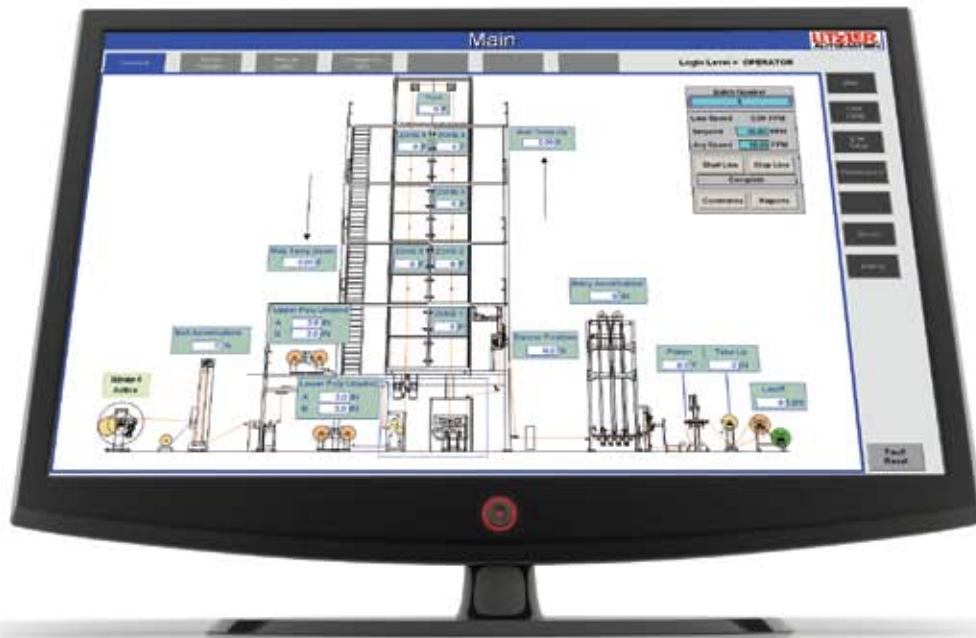


LITZLER

AUTOMATION

DRIVES & CONTROLS

Automation Services



Litzler
Human
Machine
Interface

Litzler Automation is part of C. A. Litzler Co., Inc., which was founded in 1953 in Cleveland, Ohio. Today, after years of designing and building industrial processing equipment, the Company continues to be led by the third generation of the Litzler family.

Litzler Automation offers automation solutions for customers requiring new industrial control systems or modernization of current systems. Our custom engineering capabilities enable us to provide automation services that are tailored to each application. We provide system design, PLC/HMI programming, drive systems, vision systems, data acquisition and system integration services. Our team of Automation Specialists enables Litzler Automation to handle critical, highly complex jobs on a short timeline.

Automation Services

Control System Design & Development

- Electrical Schematic Control Panel Design
- AC and DC Drive Systems
- Motion Control/Single & Multi-Axis
- HMI/SCADA Systems
- PID Design (Heat, Tension Control, etc.)
- PLC/PAC Systems
- Network Design
- DC & AC Bus Systems
- Data Acquisition/Reporting
- Robotics/Part Handling and Transfer
- Vision Systems
- Mistake-Proofing/Poka-Yoke

Other Services

- Panel Building
- Energy Conservation Projects
- Field Service (Start-up, Commissioning Services)
- Batch Processing
- Control System Audits
- CAD Drafting & Custom Programming

Why Litzler Automation?

• **EXTENSIVE CONTROL SYSTEM EXPERIENCE AND KNOWLEDGE**

Litzler Automation systems are used in many industries, including textile, converting, coating and laminating, composites, automotive, tire and rubber, plastics, food and beverage. Litzler brings years of experience providing solutions to manufacturers. Litzler Automation has systems in operation throughout the world.

• **FLEXIBLE SOFTWARE AND HARDWARE DESIGN STANDARDS**

Litzler Automation uses industry standard methods to provide a well-organized system that aids long-term support. We are flexible with customers' current software/hardware product standards, which allows Litzler to work with the component familiar to the customer. This flexibility means easier upgrades, lower capital costs, improved local support and more uptime.

• **DISCIPLINED PROJECT PLANNING AND COMMUNICATION**

Whether Litzler Automation is designing a new system or upgrading a current system, we organize the process to keep continuous communication

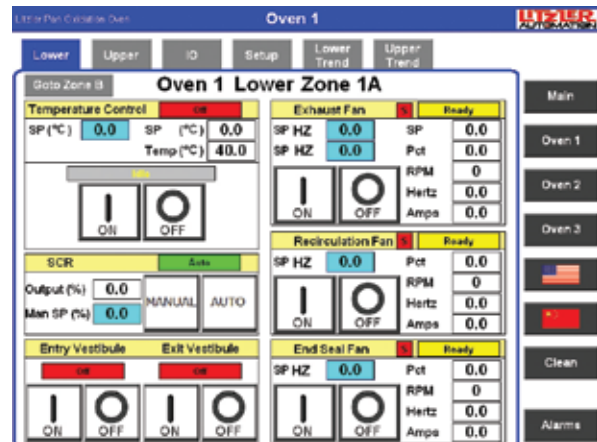
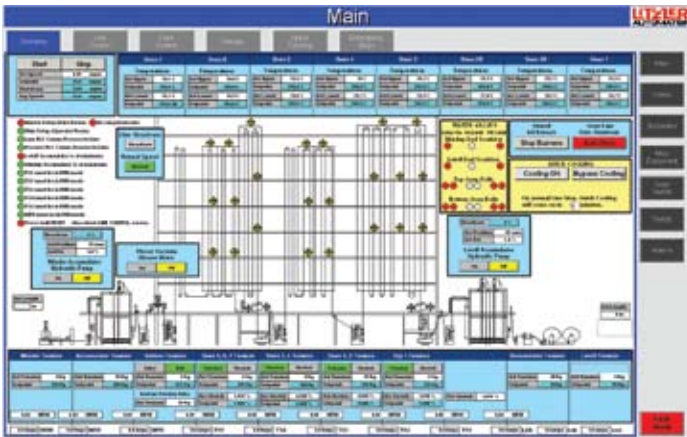
between the customer and our Litzler Automation team.

• **EXPERIENCE WITH MULTIPLE PLC/HMI/DRIVE PLATFORMS**

This includes:

- PLCs/PACs – Rockwell Automation (ControlLogix, CompactLogix, MicroLogix, SLC, PLC5), Siemens – (S5, S7), General Electric, Mitsubishi, Telemecanique, and AutomationDirect
 - Drives – Allen-Bradley®, ABB, Siemens, Fuji, GE, Mitsubishi, Yaskawa
 - Servos – Allen-Bradley®, Rexroth, GE, AMK, Mitsubishi
 - HMI – Allen-Bradley® PanelView Plus, Allen-Bradley® RS View, Wonderware, Siemens WINCC, Automation Direct C-More™, Pro-Face, GE Cimplicity
- ### • **PROVEN STABILITY AND GROWTH**
- Litzler Automation is integrated into the C. A. Litzler Co., Inc. engineering group. With over 30 technical professionals, we have the depth and experience to handle any size project in custom automation.

Examples of Projects — Summary of General Scope



Tire Cord Treater Control Systems

- 10 Coordinated AC Drives (30-200 HP) with Tension and Stretch Control
- 36 Fan Drives (25-100 HP)
- 24 Servo Drives Controlling Guiding and Spreading Equipment
- DC Common Bus System for Energy Savings
- 1350 Points of I/O
- 3 PLC Processors
- 6 HMI Units with Hot Back-Up System
- 30 Control Cabinets
- Complete Control System Documentation Package

Dip Molding and Coating Systems

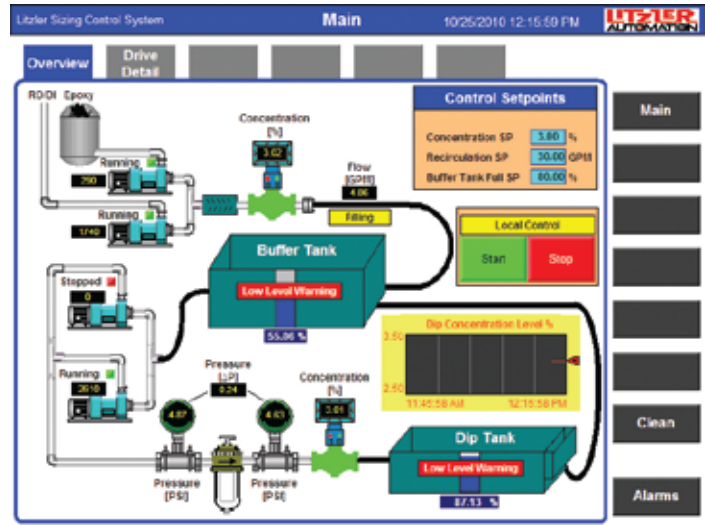
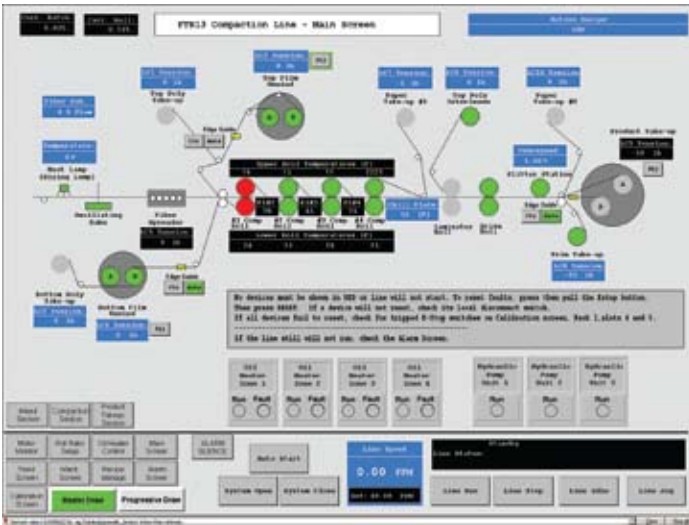
- Single or Dual High Performance Ovens
- Single or Multiple Dip Stations
- Servo Controlled Dip Mechanism
- Automated Part Transfer
- Programmable Stored Recipes
- Flexible, Configurable Operation

Oven Systems

- Up to 60 Zone Systems
- PLC or Standalone Controller PID Loops
- Heater, Burner, Hot Oil or Steam Heating
- Infrared Heaters
- T/C, RTD, IR Pyrometer Feedback
- LEL/LFL Controls for Solvent Applications
- SCR Controllers or Burner Management
- Supply and Exhaust Fan VFD Controls
- Flame Safety Systems
- Complete Control System Documentation Package

Film Processing Lines

- 90 Line Drives
- 8 Fan Drives
- 6 Zone Heater Control Loops
- Stretch and Tension Control
- PLC System with 4 Touchscreens
- DC Common Bus System for Energy Savings
- 9 Control Cabinets
- 612 Points of I/O
- Complete Control System Documentation Package
- UL Listed



Project Upgrade – Prepreg Line

- 14 New AC Drives
- Re-Use of Existing I/O and Additional I/O Points
- Pressurized Cabinets to Protect Components from Carbon Fiber
- Redundant HMI Systems for 100% Hot Backup
- Complete Control System Documentation Package

Sizing Concentration System

- PLC System to Precisely Control the Concentration Level of a Coating in Deionized Water for Carbon Fiber Production
- Multiple Pumps – VFD Controlled
- Sizing Concentration Sensors for ± .005% Accuracy
- P & ID Documentation
- Touchscreen HMI
- Complete Piping and Testing Prior to Shipment
- Documentation



- Industrial Textile Systems (Tire Cord)
- Composite Impregnation Systems
- Perfect Float® Dryers
- Oxidation Ovens (Carbon Fiber)
- Industrial Oven Systems
- THERMODRY-IR Dryers
- MCT-Dip Molding Machines
- Litzler Automation

C. A. Litzler Co., Inc.
4800 W. 160th Street
Cleveland, OH 44135 USA

Phone: 216-267-8020
Fax: 216-267-9856
sales@calitzler.com
www.calitzler.com

Litzler Shanghai
Phone: 86-21-5424-9130



- Radio Frequency Dryers
- PSC
21761 Tungsten Road
Cleveland, OH 44117 USA

Phone: 216-531-3375
Fax: 216-531-6751
info@pscrfheat.com
www.pscrfheat.com



- Pneumatic Conveying Equipment
- Industrial Exhaust Systems
- Trim Removal Systems

Quickdraft
1525 Perry Drive, S.W.
Canton, OH 44710 USA

Phone: 330-477-4574
Fax: 330-477-3314
info@quickdraft.com
www.quickdraft.com